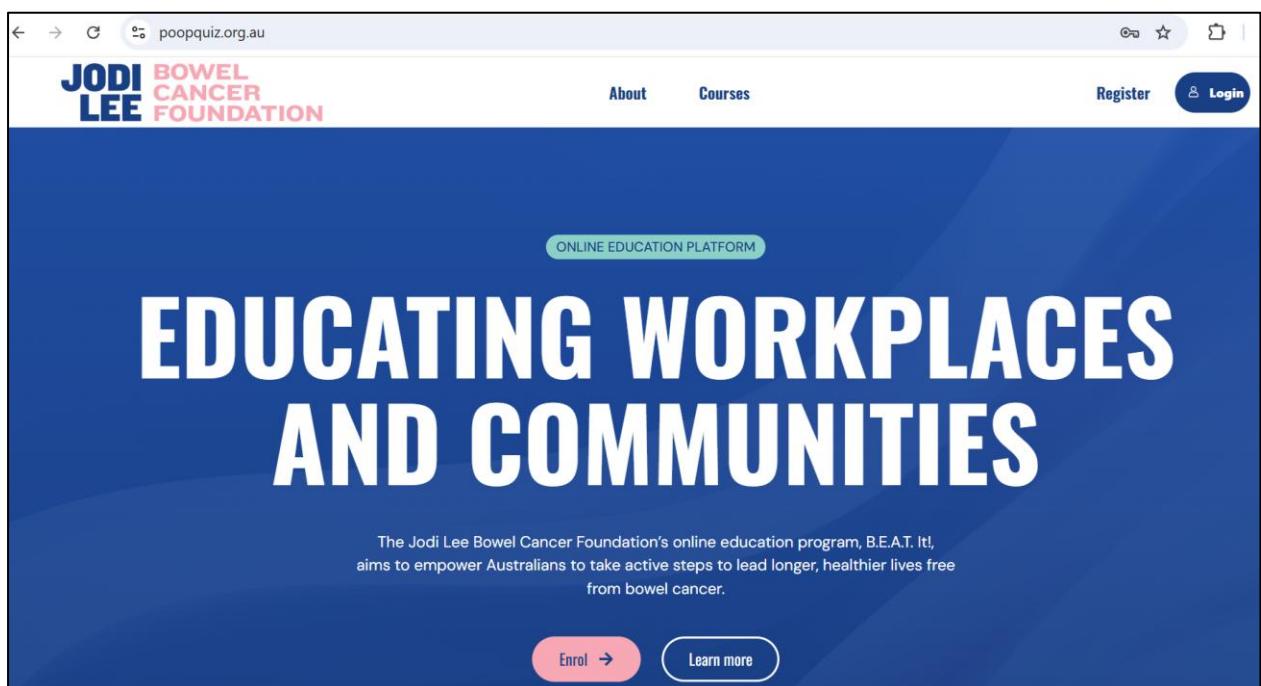


## POOP QUIZ USER GUIDE

### Accessing Poop Quiz

To access this life-saving education program, please visit [www.poopquiz.org.au](http://www.poopquiz.org.au).

Click on 'Register' in the top right-hand corner.



Fill in your details in the Registration form to create an account.

Use your Invite Code that you have been provided. The Invite Code is case sensitive and please ensure there are no spaces before or after – it needs to be exactly as you have received it.

## CREATE YOUR ACCOUNT

Username \*

First Name

Last Name

E-mail \*

Password \*

The password must have a minimum strength of Weak

Strong

Repeat Password \*

Invite Code \*

Enter your invite code exactly as provided. If you don't have a code, please contact us.

Age Range \*

Click on 'Community Program'.

## Your Courses

Expand All

○ COMMUNITY PROGRAM

Click on 'Education Module'.

## COMMUNITY PROGRAM

COURSE PROGRESS 0% 0/1 STEPS

### Course Content

Education Module

Read the Disclaimer and then click 'Open' to launch the module.

## Education Module

COMMUNITY PROGRAM / Education Module

Click on the **Open** button below to launch the module:

[Open](#)

**Disclaimer:**

The information in this education program is provided for general education and awareness only. It should not be used to diagnose, treat, or manage any health condition. Every person's health situation is different, and the examples or recommendations in the education program may not be suitable for your individual needs.

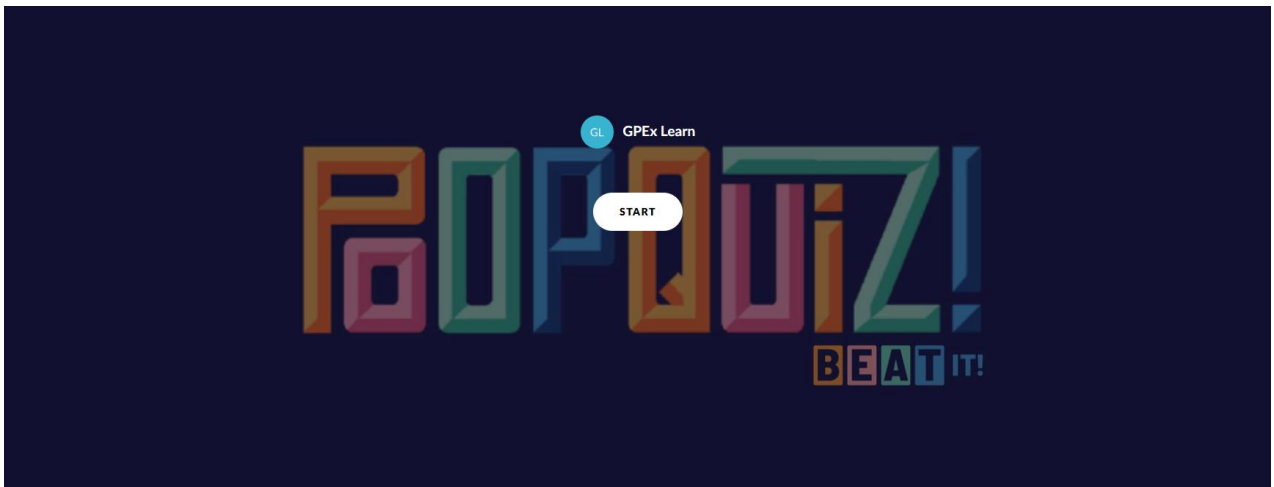
All matters relating to your health, symptoms, or personal risk factors, should be discussed with your doctor or qualified health professional. Always follow the guidance of your healthcare provider.

The Jodi Lee Bowel Cancer Foundation has taken care to ensure the information in this education program is accurate at the time of recording. We do not accept any liability for any loss, injury, damage, or harm that may arise from the use of this education program. Participation in any activities or actions suggested in this education program are voluntary and undertaken at your own discretion and risk.

---

[< Back to Course](#) [✓ Mark Complete](#) [Back to Course >](#)

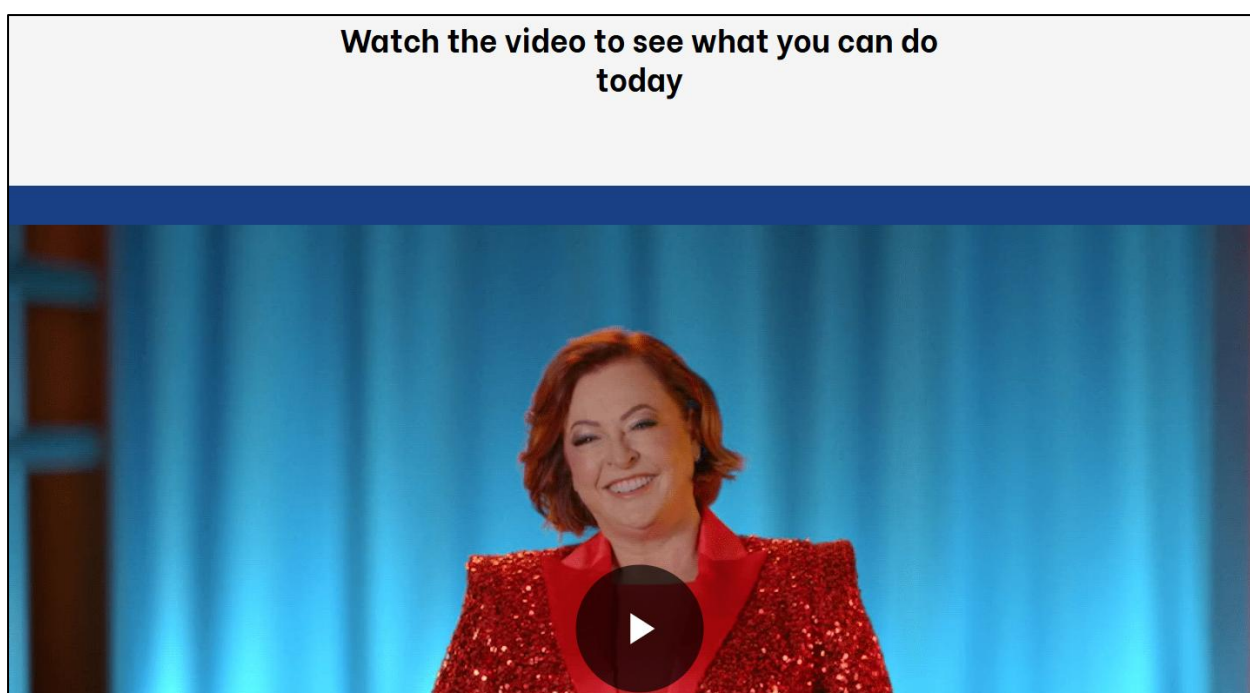
Click on 'Start' to begin the Poop Quiz program.



Click on the + buttons on each letter to learn about how to BEAT bowel cancer.



Watch the video to complete the training.



You'll find some helpful links at the end of the video to help you take action or learn more about bowel cancer and the Jodi Lee Bowel Cancer Foundation.

Thank you for taking the time to complete this program. By understanding the signs of bowel cancer, knowing your risk and taking action, you're giving yourself the best chance at early detection. Your health matters—and now you have the knowledge to protect it.

For more information about the Jodi Lee Bowel Cancer Foundation and the work we do, visit [www.jodileefoundation.org.au](http://www.jodileefoundation.org.au)